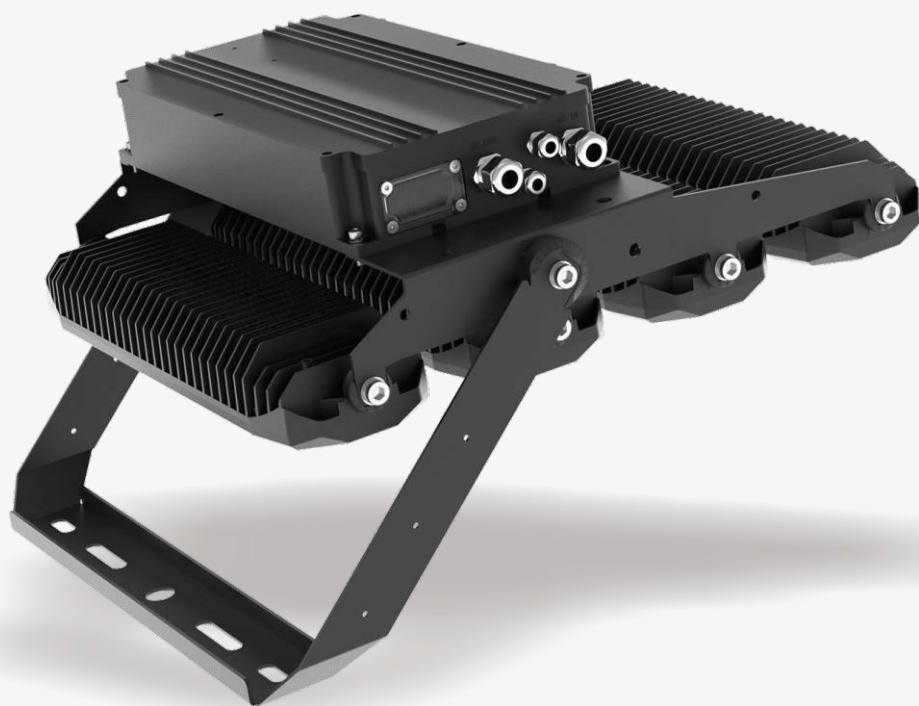


# ***M19A.S/H/P/N***

## ***Modular Floodlight***



***150W, 300W, 450W,  
650W, 900W***

Ongoing



UK  
CA



RoHS

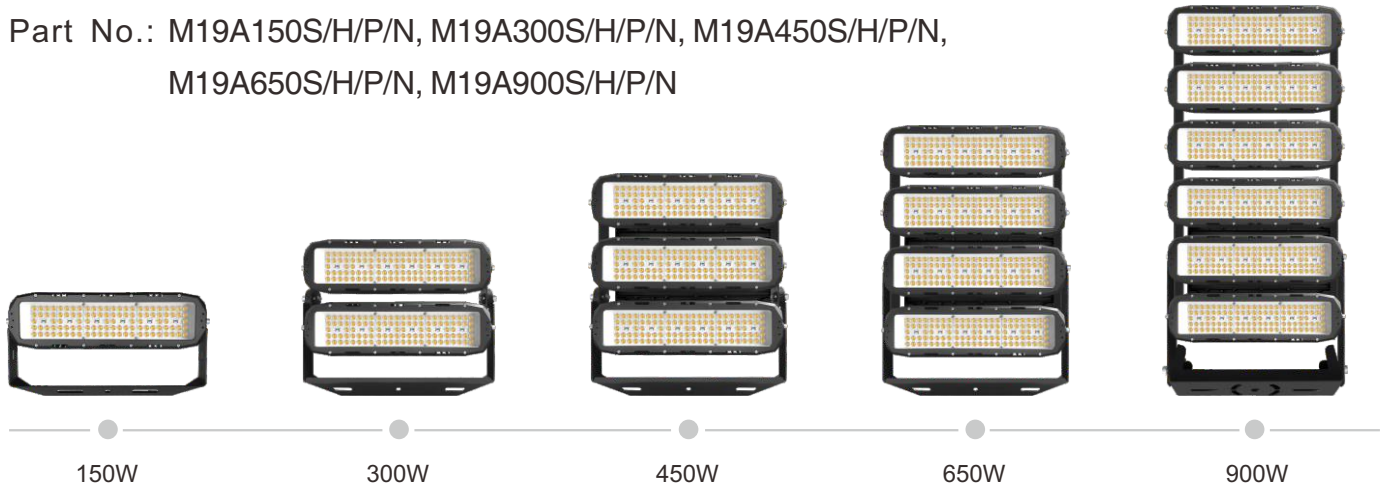


**5**  
YEARS  
WARRANTY

# SPECIFICATION

## Product: M19 Modular Floodlight

Part No.: M19A150S/H/P/N, M19A300S/H/P/N, M19A450S/H/P/N,  
M19A650S/H/P/N, M19A900S/H/P/N



## 1. Main features

- System efficiency: 150-160/130-140 lm/Watt.
- Beam angle: 15°, 30°, 60°, 90°, 110°, 90°x40° Asy, 100°x60° Asy, 5001A, 5002, 5003A.
- Super corrosion resistant; glass + PC lens design.
- Die-casting aluminum housing with AkzoNobel powder coating.
- Professional optical design, lenses of the same serie product can be interchanged.
- Inventronics driver available.
- 10/6KV surge protection.
- Module angle adjustable.
- Dali-2, 0/1-10V, DMX Dimmable available

## 2. Product details



### 3. Technical data

Model No.	M19A150S	M19A300S	M19A450S	M19A650S	M19A900S
Light Source	Lightning 3030	Lightning 3030	Lightning 3030	Lightning 3030	Lightning 3030
Input Voltage	100-240VAC 50/60Hz	100-240VAC 50/60Hz	100-240VAC 50/60Hz	100-240VAC 50/60Hz	100-240VAC 50/60Hz
LED Power (W)	139-146	277-292	416-438	574-606	822-877
System Power(W)	151-159	298-314	440-464	624-658	856-923
Luminous Flux(lm)	23,000-23,800	44,700-47,200	66,000-69,600	93,600-98,700	131,900-139,200
Beam Angle	110°	110°	110°	110°	110°
Net Weight (Kg)	6.1	10.2	13.9	17.2	25.8

Model No.	M19A150H	M19A300H	M19A450H	M19A650H	M19A900H
Light Source	Seoul 5050	Seoul 5050	Seoul 5050	Seoul 5050	Seoul 5050
Input Voltage	100-240VAC 50/60Hz	100-240VAC 50/60Hz	100-240VAC 50/60Hz	100-240VAC 50/60Hz	100-240VAC 50/60Hz
LED Power (W)	134-146	267-292	401-438	553-606	801-877
System Power(W)	145-159	287-314	424-466	601-658	844-923
Luminous Flux(lm)	22,500-25,000	44,500-48,800	66,100-72,300	95,500-104,500	126,500-138,500
Beam Angle	30°/60°/90°/90°x40°Asy /100°x60°Asy	30°/60°/90°/90°x40°Asy /100°x60°Asy	30°/60°/90°/90°x40°Asy /100°x60°Asy	30°/60°/90°/90°x40°Asy /100°x60°Asy	30°/60°/90°/90°x40°Asy /100°x60°Asy
Net Weight (Kg)	6.1	10.2	13.9	17.2	25.8

Model No.	M19A150P	M19A300P	M19A450P	M19A650P	M19A900P
Light Source	Seoul 5050	Seoul 5050	Seoul 5050	Seoul 5050	Seoul 5050
Input Voltage	100-240VAC 50/60Hz	100-240VAC 50/60Hz	100-240VAC 50/60Hz	100-240VAC 50/60Hz	100-240VAC 50/60Hz
LED Power (W)	134-149	267-297	416-446	574-616	828-877
System Power(W)	145-161	292-319	442-474	624-669	874-922
Luminous Flux(lm)	19,400-20,900	38,700-42,000	58,100-62,700	83,900-90,600	116,300-125,400
Beam Angle	5001A, 5002, 5003A	5001A, 5002, 5003A	5001A, 5002, 5003A	5001A, 5002, 5003A	5001A, 5002, 5003A
Net Weight (Kg)	6.1	10.2	13.9	17.2	25.8

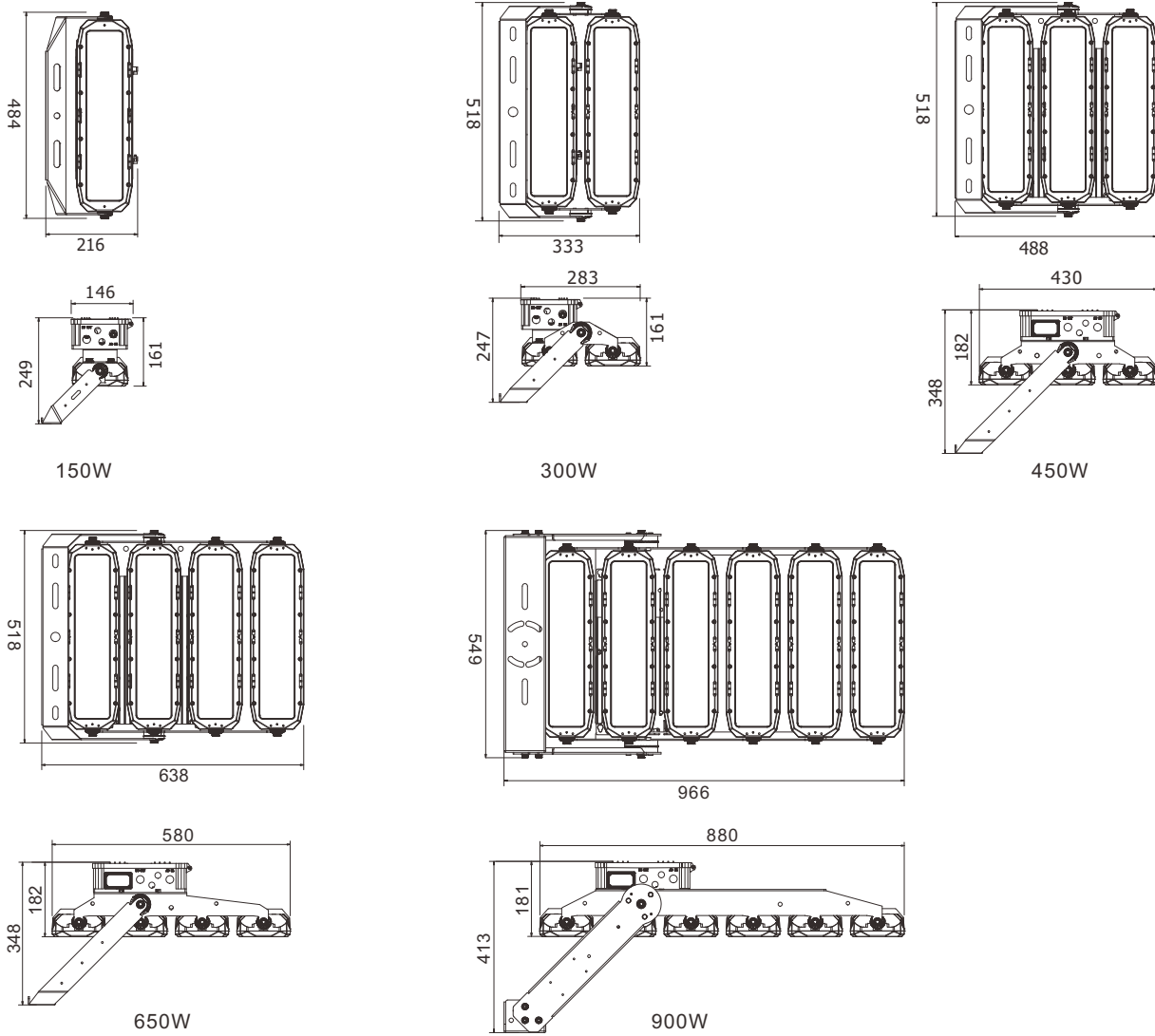
Model No.	M19A150N	M19A300N	M19A450N	M19A650N	M19A900N
Light Source	Seoul / Lumileds 3535	Seoul / Lumileds 3535	Seoul / Lumileds 3535	Seoul / Lumileds 3535	Seoul / Lumileds 3535
Input Voltage	100-240VAC 50/60Hz	100-240VAC 50/60Hz	100-240VAC 50/60Hz	100-240VAC 50/60Hz	100-240VAC 50/60Hz
LED Power (W)	134-149	267-297	416-446	574-616	828-877
System Power(W)	145-161	292-319	442-474	624-669	874-922
Luminous Flux(lm)	20,100-21,800	40,500-43,400	60,700-65,200	87,700-94,300	121,400-130,400
Beam Angle	15°	15°	15°	15°	15°
Net Weight (Kg)	6.1	10.2	13.9	17.2	25.8

CCT (K)	3000/4000/5700
CRI	>70
Power Factor	>0.95
THD (230VAC)	<20%
Optical Cover	Glass
Housing Color	Black / Gray
Working Temperature	-20°C to +50°C
Working Humidity(RH%)	10-90
Power Cable	1m H07RN-F 3x1.5

#### Qty of products to each Circuit Breaker

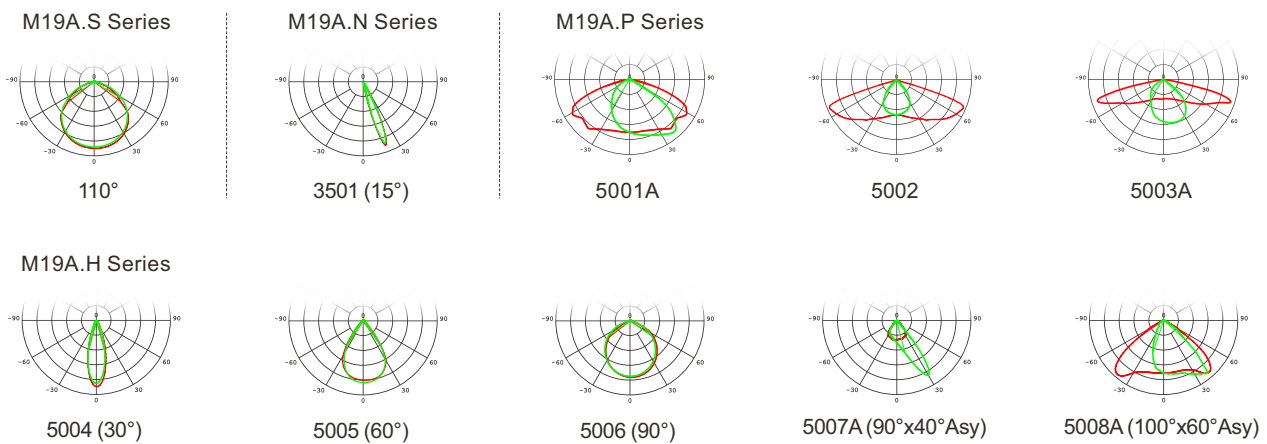
Power	B10	B16	C10	C16	D10	D16
150W	4	6	6	10	10	16
300W	2	3	3	6	4	8
450W	1	3	2	4	3	6
650W	1	2	1	3	2	3
900W	1	2	1	2	1	2

#### 4. Dimensions (Unit: mm)



#### 5. Luminous intensity distribution diagram

For the IES file, please contact us by E-mail.



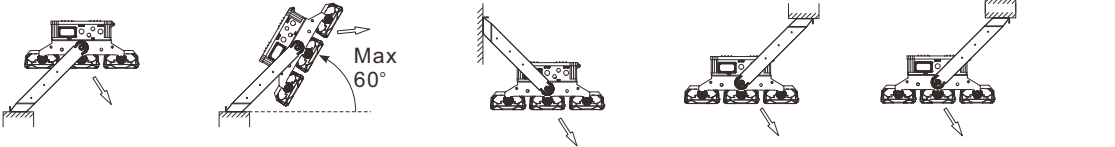
## 6. Installation



- For details, please refer to Installation Instruction.
- Installation must be performed by qualified person.
- Disconnect before installation.
- Installation tools are not provided.

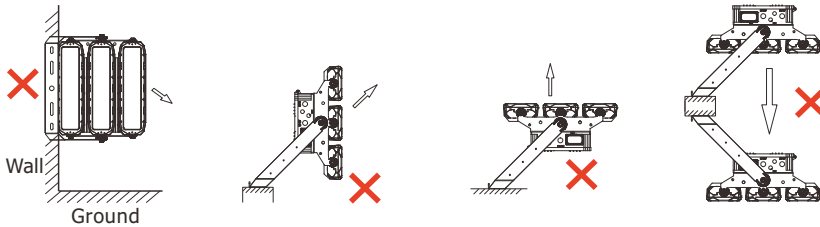
### ✔ Position allowed

This Modular floodlight can be installed on pole, wall, ceiling or on a horizontal surface.



### ✘ Position not allowed

**Note:** Considering the heat dissipation, load bearing and dust accumulation, some installation methods are not allowed.



## 7. Application

Suitable for seaside, ship, container terminal, harbor, farm, sports fields, factory, warehouse, supermarket, toll stations, gas stations, tunnel, parking lot, etc.

