



Description

Altech's Hyper Series Area Light LED fixture debuted at Lightfair in 2018. With a higher lumen output, it is sure to provide any project with more than enough coverage.



Not all product variations listed on this page are DLC Premium qualified. To ensure that a specific model is qualified, visit www.designlights.org/search

Applications

| | | |
|------------------|----------------|---------------|
| Auto Dealerships | Outdoor Courts | Outdoor Malls |
| Parking Lots | Sports Fields | Public Parks |

Specs

| | |
|---------------|----------|
| Efficacy | 165 lm/W |
| Input Voltage | 100-277V |
| Finish | Bronze |

Details

| | |
|------------------|--------------------------------|
| IP Rating | IP67 |
| EPA Rating | 0.9 |
| Materials | Die Cast Aluminum |
| Lens | Polycarbonate |
| L70 Life | 150,000 Hours |
| Warranty | 10 Years |
| CRI | 80+ |
| Qualification | UL, DLC Premium, FCC, CE, RoHS |
| Chip Man. | Philips |
| Whip Length (ft) | 1.67' |

Electrical

| | |
|-----------------|-------------------------------------|
| Power Factor | 0.99 |
| Frequency | 50/60 Hz |
| Max THD | 10% |
| Operating Temp. | -40° F to 150° F -40° C to 65° C |
| Dimming | 3 in 1 (Resistance, PWM, 0-10V) |

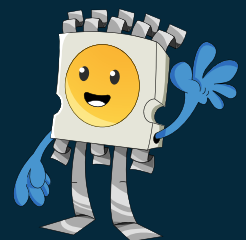
LED AREA LIGHT HYPER SERIES, LARGE

Product Information

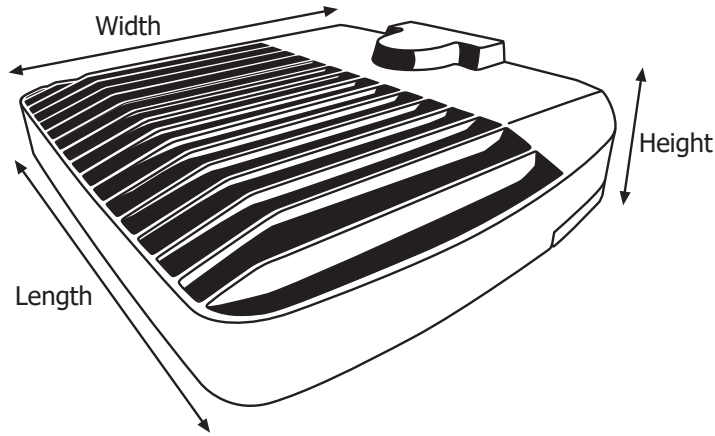
| ORDERING/DLC #: | Wattage | CCT | Lumens | Equivalent |
|------------------|---------|-------|-----------|------------|
| U-HALL-150W-30-D | 150W | 3000K | 23,250 lm | 750W MH |
| U-HALL-150W-40-D | 150W | 4000K | 24,150 lm | 750W MH |
| U-HALL-150W-50-D | 150W | 5000K | 25,050 lm | 750W MH |
| U-HALL-240W-30-D | 240W | 3000K | 38,400 lm | 1200W MH |
| U-HALL-240W-40-D | 240W | 4000K | 39,840 lm | 1200W MH |
| U-HALL-240W-50-D | 240W | 5000K | 41,280 lm | 1200W MH |
| U-HALL-300W-30-D | 300W | 3000K | 47,400 lm | 1500W MH |
| U-HALL-300W-40-D | 300W | 4000K | 49,200 lm | 1500W MH |
| U-HALL-300W-50-D | 300W | 5000K | 51,000 lm | 1500W MH |
| U-HALL-400W-30-D | 400W | 3000K | 60,000 lm | 2000W MH |
| U-HALL-400W-40-D | 400W | 4000K | 62,400 lm | 2000W MH |
| U-HALL-400W-50-D | 400W | 5000K | 64,800 lm | 2000W MH |

Additional Notes

- 4000K and 5000K, 100-277V in BRONZE are stocked locally, check for ETA's
- Lifespan is more than 27 years operating 10 hours a day, based on L70 standards
- Altech Electronics reserves the right to make periodic improvements to our product specs



Fixture Dimensions and Weight



| Length | Width | Height | Weight |
|-----------|----------|---------|----------|
| 19.75 in. | 16.8 in. | 4 in. | 25 lb. |
| 502 mm. | 427 mm. | 102 mm. | 11.3 kg. |

Accessories and Options

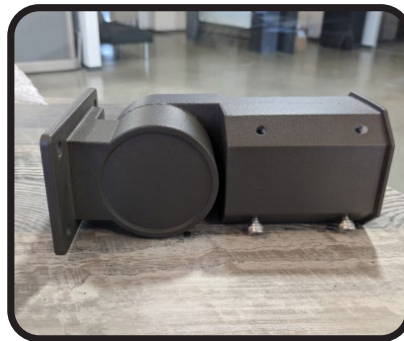


Compatible with controls and integrations

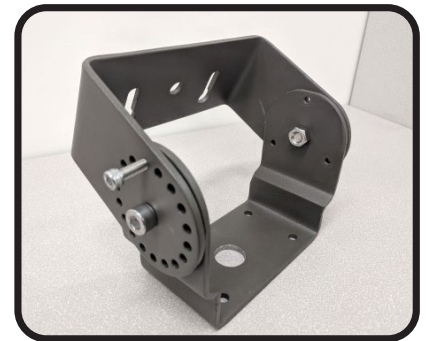
Mounting Options



6" Extruded Arm Mount



Slip Fitter Mount



Trunnion Mount

Wiring Precaution

The international color scheme is brown (hot), blue (neutral) and green/yellow (ground) wiring. Always disconnect power when installing or troubleshooting. Consult a licensed technician.



Fixture-to-Mount Installation

1. Match screw holes on the mount with the fixture. (Refer to image on the right)
2. Run the wire from the fixture through mount.
3. Hand-tighten the screws into place.
4. Tighten the screws with a tool to secure it.
5. Installation complete.

