



Pictured with motion sensor

## Description

Altech's Hyper Series Area Light LED fixture debuted at Lightfair in 2018. With a higher lumen output, it is sure to provide any project with more than enough coverage.



## Applications

Auto Dealerships  
Parking Lots

Outdoor Courts  
Sports Fields

Outdoor Malls  
Public Parks

## Details

IP Rating	IP67
EPA Rating	0.9
Materials	Die Cast Aluminum
Lens	Polycarbonate
L70 Life	150,000 Hours
Warranty	10 Years
CRI	80+
Qualification	UL, DLC Premium, FCC, CE, RoHS
Chip Man.	Philips

## Electrical

Power Factor	0.99
Frequency	50/60 Hz
Max THD	10%
Operating Temp.	-40° F to 150° F -40° C to 65° C
Dimming	3 in 1 (Resistance, PWM, 0-10V)

MODEL/DLC #:	U-HALL-150W-50	U-HALL-240W-50	U-HALL-300W-50	U-HALL-400W-50
<b>Color Temp:</b>	5000K	5000K	5000K	5000K
<b>Input Wattage:</b>	150W	240W	300W	400W
<b>Lumens:</b>	25,050 lm	41,280 lm	51,000 lm	64,800 lm
<b>Equivalent:</b>	750W MH	1,200W MH	1,500W MH	2,000W MH

## Ordering Information

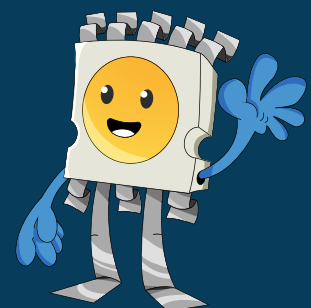
Example: U-HALL-400W-50-165-T3-1-SF-P-BZ

Item	Wtg	Color Temp.	Lumen Package	Distribution	Input Voltage	Mounting	Options	Finish
U-HALL	150W 240W 300W 400W	30 - 3000K 40 - 4000K 50 - 5000K* 57 - 5700K	165 - 165 lm/W* 185 - 185 lm/W	T3 - Type 3* T4 - Type 4 T5 - Type 5	1 - 100-277V* 2 - 480V	6A - 6" Extruded Arm SF - Slip Fitter TM - Trunnion Mount W - Wall Mount (6" Extruded Arm)	P - NEMA Photocell MS - Motion Sensor EI - Emergency Inverter (X)P - (X)-Pin Twist-Lock Base (X = select one: 3,5, or 7) WP(X) - Additional Whip (X = specify total length in ft.; 1.67' is standard) S - 3 Side Glare Shields	BZ - Bronze* BL - Black WH - White GR - Gray SP - Other

\*Standard

## Additional Notes

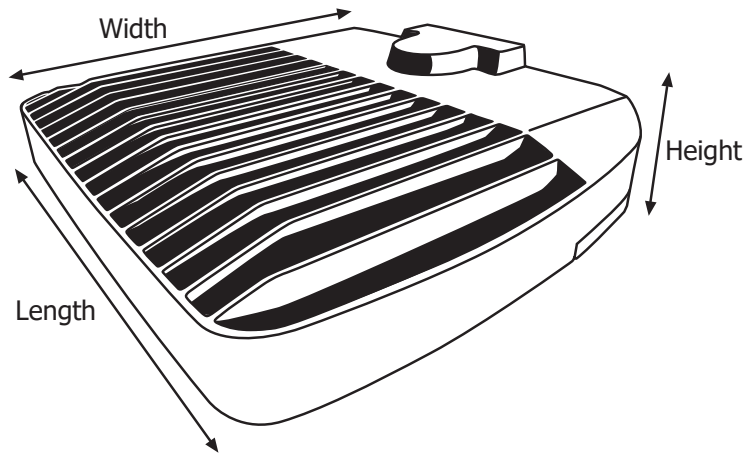
- 4000K and 5000K, 100-277V in BRONZE are stocked locally, check for ETA's
- Lifespan is more than 27 years operating 10 hours a day, based on L70 standards
- Additional charges apply for items under "Options" column and non-standard colors
- Not all product variations listed on this page are DLC Premium qualified. To ensure that a specific model is qualified, visit [www.designlights.org/search](http://www.designlights.org/search).



**Lumen Output (based on 5000K)**

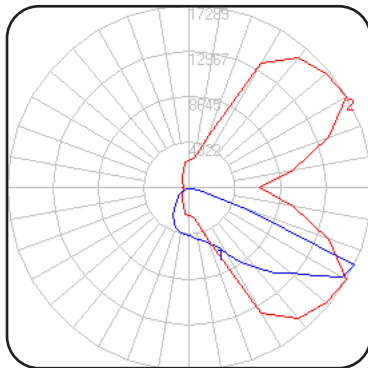
System Watts	Dist. Type	lm/W	Lumens	B	U	G
150	T3	167	25,050	3	0	3
	T4	163	24,492	3	1	3
	T5	166	24,870	5	0	3
240	T3	172	41,280	4	0	4
	T4	163	39,239	4	1	4
	T5	166	39,792	5	0	4
300	T3	170	51,000	4	0	4
	T4	163	49,024	4	1	5
	T5	166	49,740	5	0	5
400	T3	162	64,800	5	0	5
	T4	163	65,332	5	1	5
	T5	166	66,319	5	0	5

**Fixture Dimensions and Weight**

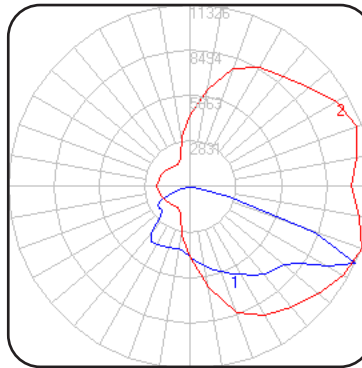


Length	Width	Height	Weight
19.75 in.	16.8 in.	4 in.	25 lb.
502 mm.	427 mm.	102 mm.	11.3 kg.

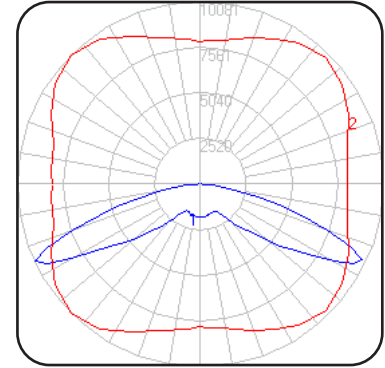
**Distribution Types**



Type 3 (300W)



Type 4 (300W)

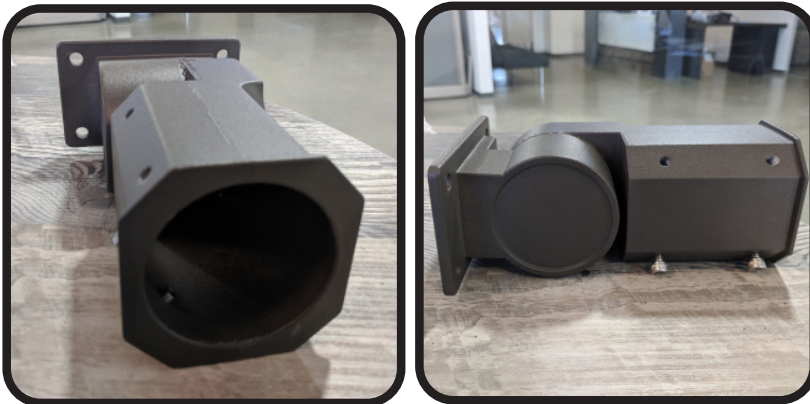


Type 5 (300W)

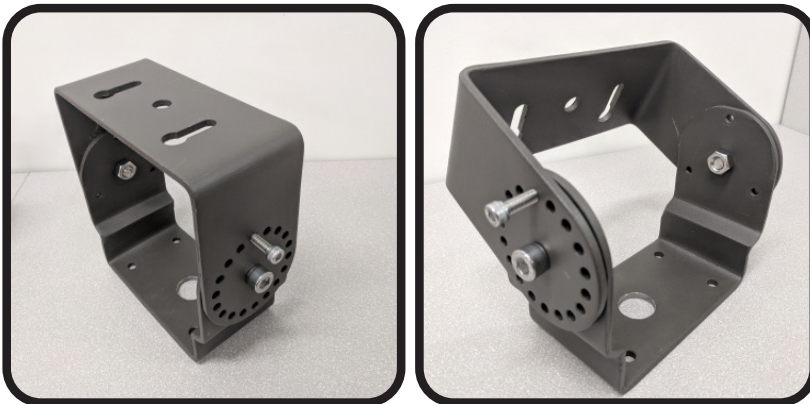
*Mounting Options*



6" Extruded Arm Mount



Slip Fitter Mount



Trunnion Mount

AREA LIGHT HYPER SERIES, LARGE



### Wiring Precaution

The international color scheme is brown (hot), blue (neutral) and green/yellow (ground) wiring. Always disconnect power when installing or troubleshooting. Consult a licensed technician.



### Fixture-to-Mount Installation

1. Match screw holes on the mount with the fixture. (Refer to image on the right)
2. Run the wire from the fixture through mount.
3. Hand-tighten the screws into place.
4. Tighten the screws with a tool to secure it.
5. Installation complete.

