



Wattage:	100W & 150W	240W & 320W
Height:	6.7in / 170.2 mm	7.5 in / 190.5 mm
Diameter:	13.2 in / 335.28 mm	16.9 in / 429.26 mm
Weight (lb):	11.7 lb / 12.6 lb	19.8 lb / 21.6 lb
Weight (kg):	5.3kg / 5.7kg	8.9 kg / 9.8 kg



### Applications:

- |                    |               |
|--------------------|---------------|
| Warehouse Lighting | Gymnasiums    |
| Cold Storage       | Indoor Arenas |
| Shopping Centers   | Exhibit Halls |

### Description:

The HBUFO High Bay fixture is the perfect LED to replace all your existing HID and Fluorescent High Bay lights. With dimming ballast and motion sensor options, you can't go wrong.

### Details:

IP Rating	IP67
Material	Die Cast Aluminum
Lens	Tempered Glass / Acrylic
L70 Life	100,000 Hours
Warranty	10 Years
CRI	83+
Certification	UL, DLC 4.2, FCC, CE, RoHS
Driver Man.	Mean Well
Chip Man.	Phillips

### Electrical:

Power Factor	0.99
Frequency	50/60 Hz
Max THD (%)	15
Operating Temp.	-30° F to 150° F -34° C to 65° C
Dimming	3 in 1 (Resistance, PWM, 1-10V)

HIGH BAY WATERPROOF UFO

## Ordering Information

Series: HBUFO

DLC Family: U-IHB

Wtg	Lumen Pckge	Color Temp.	Input Voltage	Beam Angle	Mounting	Options	Finish
60	130 L/W	30K - 3000K	1 - 120-277V	1 - 120°	H - Hook (standard)	WP - 4' Whip	BL - Black
100	165 L/W	40K - 4000K	2 - 480V*		Y - Yoke Mount	TL - Twist Lock Cap	W - White
150	185 L/W	50K - 5000K			P - Pendant	MS - Motion Sensor	
240						DIM - Dimming	SP - Other
320							

Example: HBUFO-150-130-50K-1-1-H-WP-BL

Input Wattage:	60W	100W	150W	240W	320W
Equivalent:	250W	400W	1000W	1500W	2000W

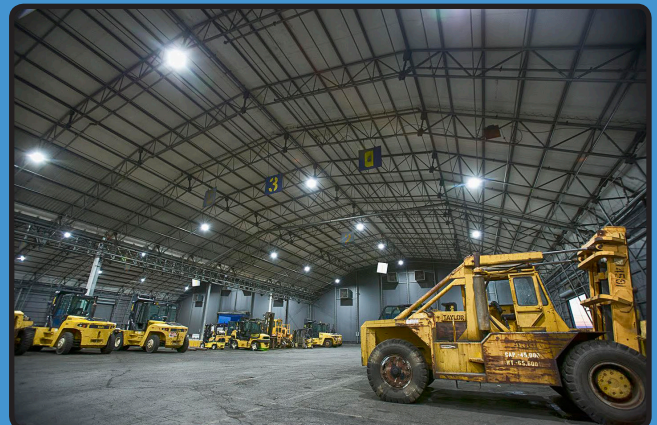
### Standard Colors



### Custom Colors



- Notes:
- Only 5000K in black are in stocked locally, check for ETA's
  - 480V is special order only and will reduce the warranty to 5 years.
  - Must specify pendant type when ordering.

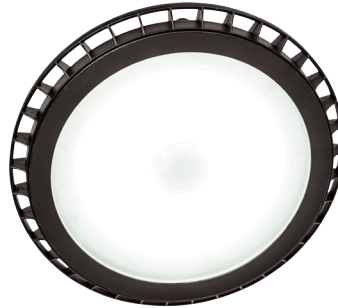


**Lumen Output at 5700K**

System Watts	Lumens	LPW	Lumens	LPW	Lumens	LPW
60	6,800	130	9,900	165	11,100	185
100	13,300	130	16,000	165	18,000	185
150	18,900	130	24,000	165	27,000	185
240	34,230	130	38,400	165	43,200	185
320	41,600	130	51,200	165	57,600	185



Multi-Level Motion Sensor



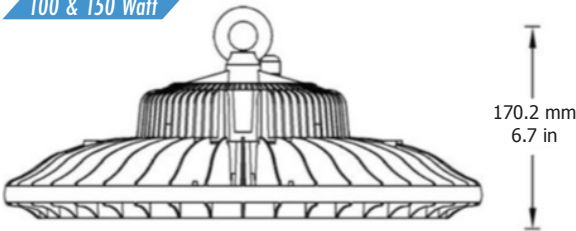
Frontal View



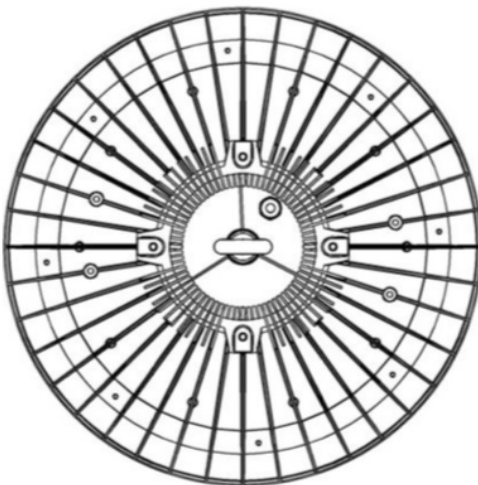
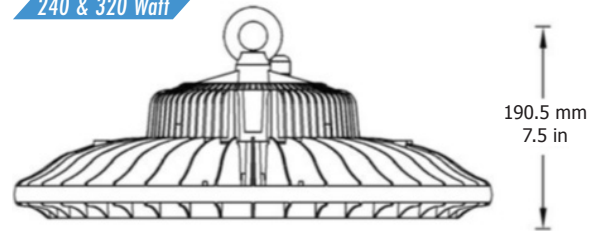
Pendant Adapter

**Dimensions**

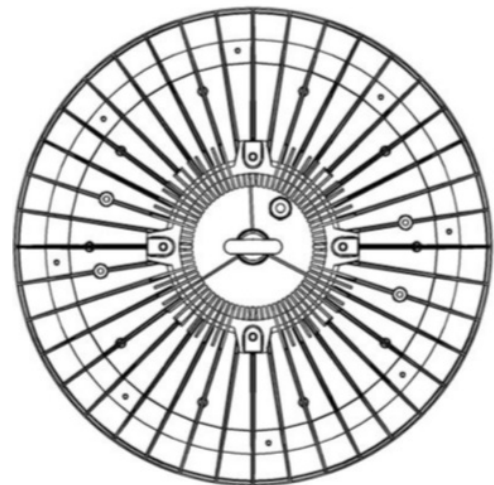
100 & 150 Watt



240 & 320 Watt

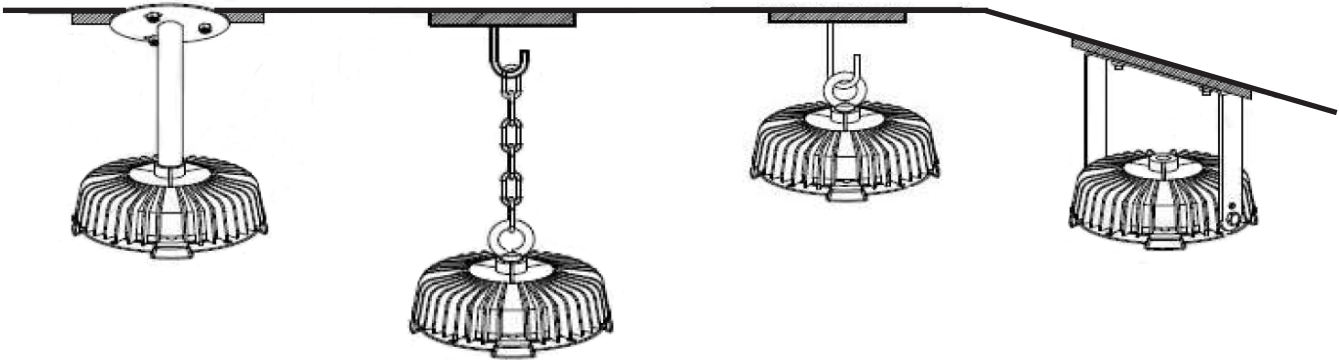


335.28 mm  
13.2 in



429.26 mm  
16.9 in

### Mounting Options



Boom Installation

Chain Installation

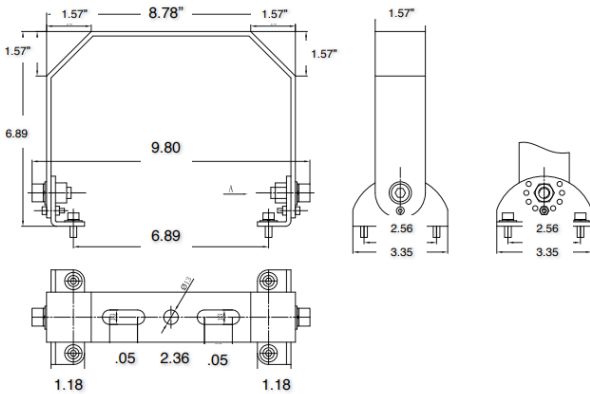
Ring Installation

Bracket Mounting

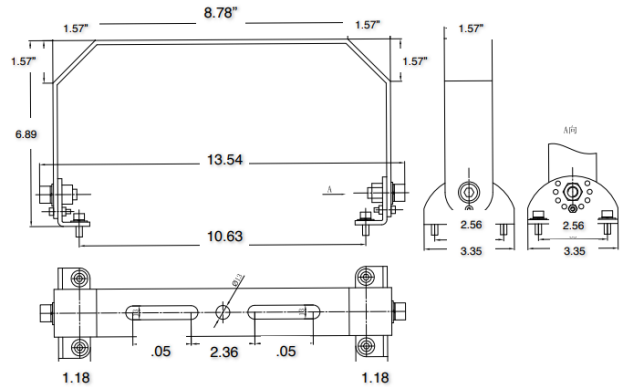
HIGH BAY WATERPROOF UFO

### Bracket Dimensions

#### 100 & 150 Watt U-Bracket

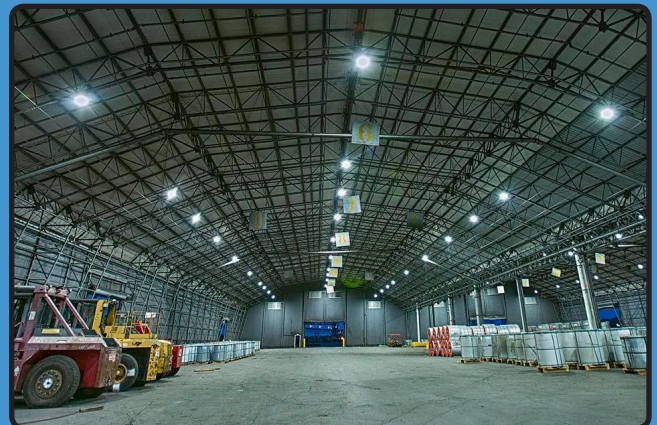
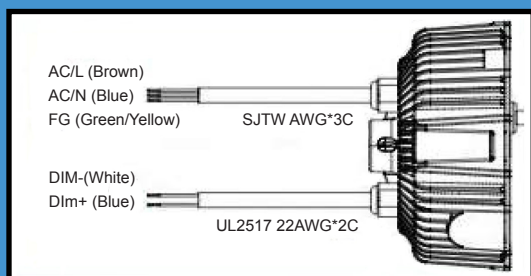


#### 240 Watt U-Bracket

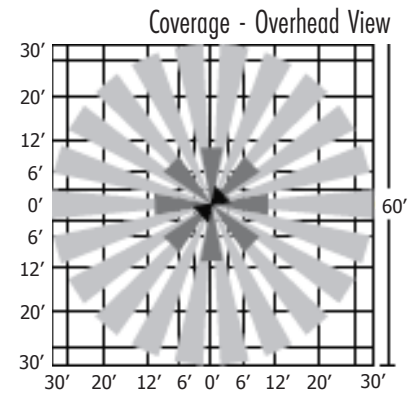
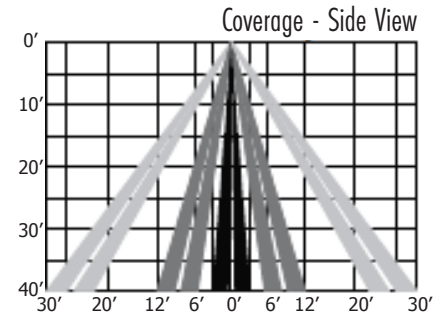
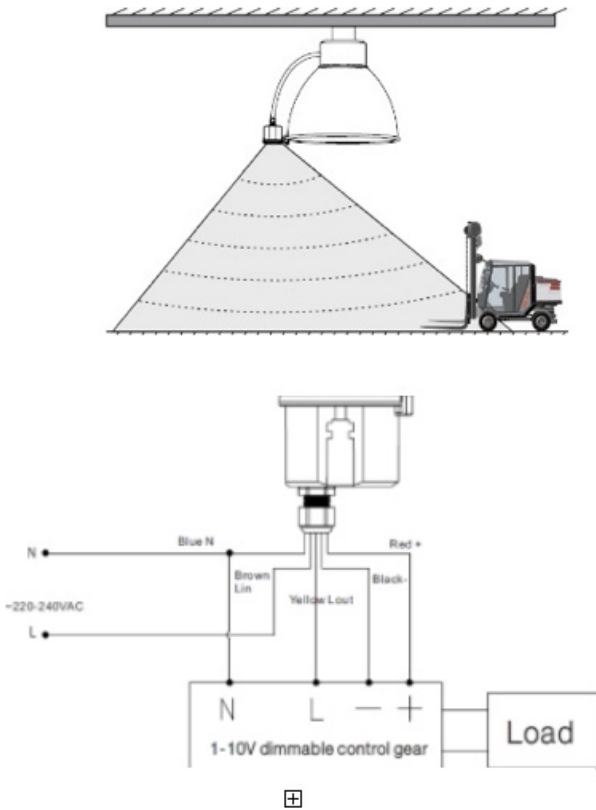


### Installation

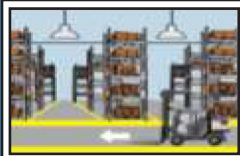
1. Important: Shut the power down
2. Hang the fixture.
3. Connect the power.



**Motion Sensor**



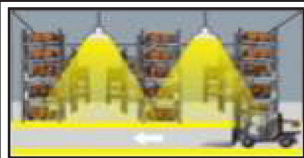
**Motion Detection**



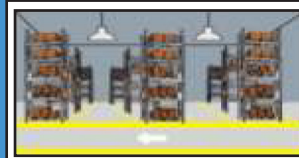
With sufficient ambient light, the sensor does not turn the fixture on.



After hold time, the sensor dims the fixture to a low light level if no new motion is detected.



With insufficient ambient light, the sensor turns the fixture on when motion is detected.



After stand-by-period, the sensor turns off the fixture if no motion is detected in its zone.

This 3-Step Dimming/Daylight Sensor provides a simple energy-saving solution to use light only when and where you need it. The motion sensor can be mounted at a maximum of 49 feet above the ground and still detect moving objects within as 2,500 square foot area. This sensor also has a daylight sensor for even more added lighting customization and energy savings.